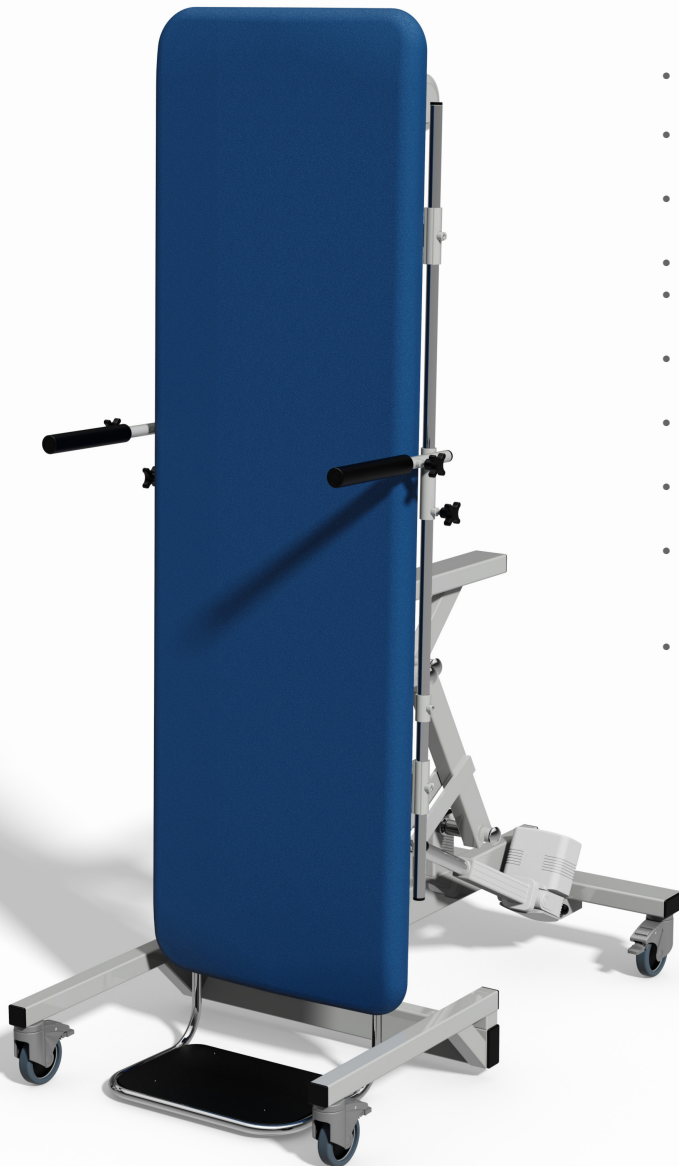


Overview:

The model 501 has been designed for the rehabilitation of patients recovering from long term illnesses, stroke, head injury and various physical disabilities. The tilt table provides the means to support the patient in a weight bearing semi-standing or standing positions to improve muscular strength prior to the commencement of walking procedures. This model has a safe working load of 160kgs and has a tilting range from horizontal to +85°. The table is supplied with a set of patient harnesses and a pair of handgrips for tilting procedures. A range of optional accessories can be selected to meet user requirements.



Benefits

- Lifetime frame & 5 year parts guarantee - see website for further details
- Electric hand switch control of height and tilting function from horizontal to +85°
- Supplied with foot board, handgrips and set of three harnesses for patient security
- 130mm clearance beneath frame for mobile hoist
- Safe working load and lifting capacity of 160kgs (350lb / 25 stone)
- Independently braked castors for moving the table around the clinic or day room
- Option of angle indicator for recording the angle used in each session
- Low patient transfer height of 52cm (20") Maximum height 97cm (38")
- Optional dual adjustable angle foot boards for positioning the feet of patients with foot and ankle conditions
- Choice of options and accessories to meet user requirements

Overall Dimensions

Length: 185cm (73") approx
Width: 58cm (23") approx
Height: 52cm - 97cm approx
(20" - 38") approx

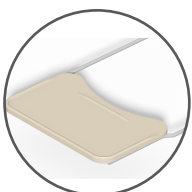
Upholstery Dimensions

185

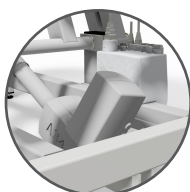


58

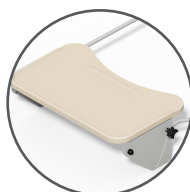
Options & Accessories:



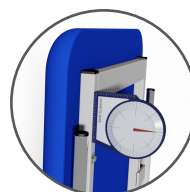
Patient Table



Battery Back-up



Tilting Patient Table



Angle Indicator

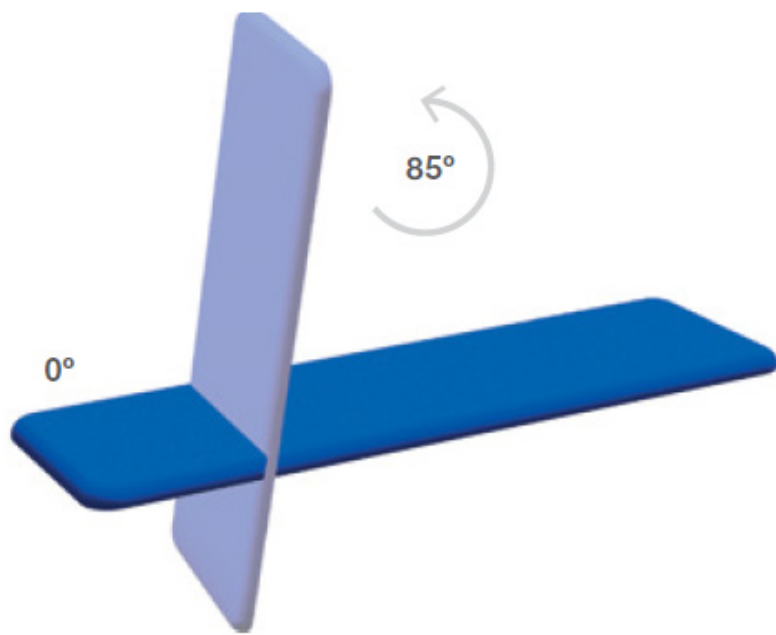


D Cushion



Divided Foot Boards

Operational Parameters



Model 501 - Electric Version

Standard Features

- Designed and manufactured in the UK
- Lifetime frame & 5 year parts guarantee
- 16 year average lifespan
- Electric height & tilt operation
- Comfort foam
- Easy operation
- Low running costs
- Hardwearing anti-microbial vinyl
- Safe working load 160kg
- 100mm toe braked castors
- Hoist clearance 130mm
- Swing back patient grab handles
- Set of patient harnesses
- Standard patient foot board

Technical Standards

- IP Rating - IPx4
- EEC Classification - MDD93/42/EEC Annex IX Class 1
- Electrical Standard - IEC601 Part 1 + 60601 P (EN)
- Vinyl Flame Retardant to CRIB 5 (BS 7176)
- Foam to BS 5852: Part 2: 1982, Ignition Source 5 [CRIB 5]
- CE Marked
- Externally audited to ISO9001:2015 by LRQA

Delivery Promise

- Delivery to UK mainland in just 7-10 working days
- Faster service may be available if required
- Overseas delivery 7-10 days plus shipping time

Upholstery Vinyl

- Flame retardant to BS 5852 Ignition Source 5 - CRIB 5 (BS 7176) Medium Hazard
- Independently tested to verify effectiveness at reducing the spread of MRSA, E.coli & other similar bacteria & fungi
- Rated at 500,000 Martindale rubs without damaging or marking the top layer, making it suitable for all high-traffic, heavy-duty areas
- Phthalate free
- Please note: If the upholstery colour is not specified, 'Almond' will be supplied



Jasmine



Battleship



Cobalt



Cocoa



Grape



Mulled Wine



Pillarbox



Gingersnap



Candy



Applemint



Sapphire



Atlantic Blue



Lupin



Denim



Cool Blue



Rainforest



Wasabi



Citrus Green



Marigold



Almond